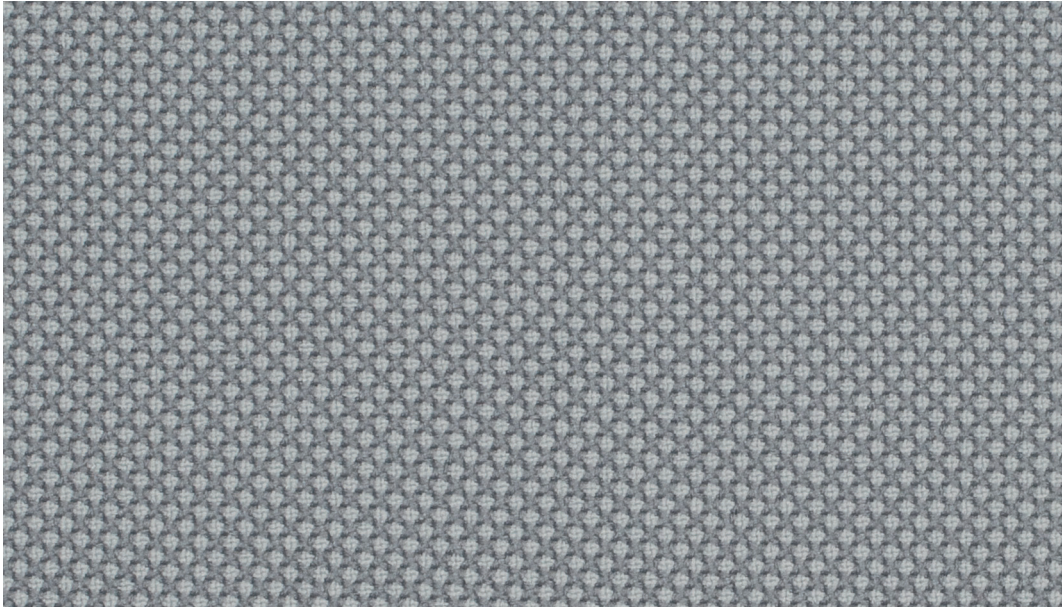




**REPETTO™**

---

by Gabriel



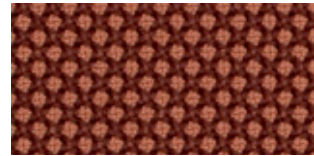
1401



1401



1801



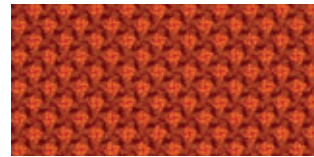
1901



1301



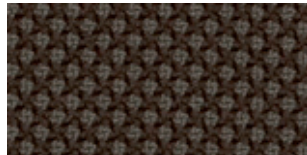
1701



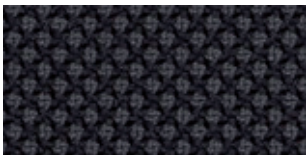
2001



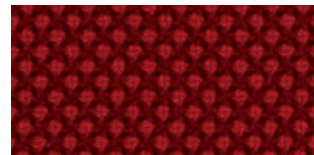
1201



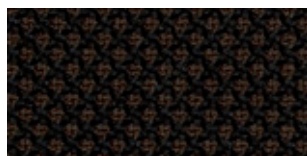
1601



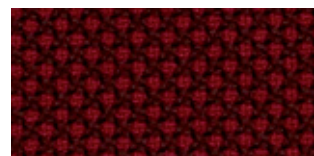
1101



2101



1501

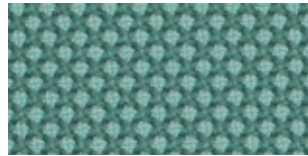


2201

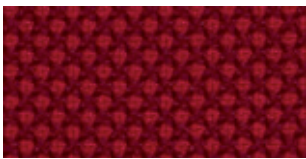
Please be aware that the PDF colour shades can appear different from the real fabric colours.



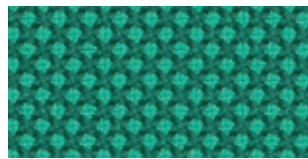
2401



3101



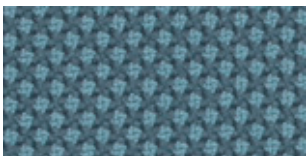
2301



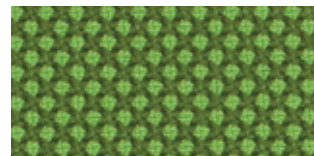
3001



3301



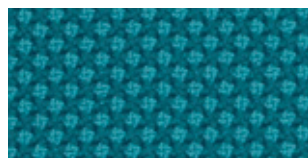
2801



3201



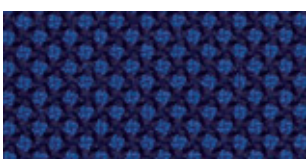
2501



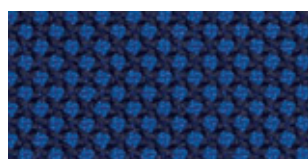
2901



3401



2601



2701



3501

Please be aware that the PDF colour shades can appear different from the real fabric colours.

# REPETTO™

Design no.	2463	
Fields of application	contract	
Material	post consumer recycled polyester	100 %
Weight	440 g/lm · (14.19 oz/lin.yd.)	
Width	140 cm · (55")	
Abrasion resistance	rubs · EN ISO 12947-2 (Martindale)	100,000
Pilling	scale 1-5, max 5 · EN ISO 12945-2	4-5
Colour fastness to light	scale 1-8, max 8 · EN ISO 105 - B02	5-8
Colour fastness to rubbing	scale 1-5, max 5 · EN ISO 105x12 (wet/dry)	4-5
Maintenance	dry cleaning	P(W)
	🧺 Shrinkage: max. 1,5%	
Flammability	EN 1021 1&2 · BS 5852 0&1 · CA TB 117-2013 Will also pass other flammability standards. Flame retardant performance is dependent upon the foam used.	
US ACT	<ul style="list-style-type: none"> <li>☀️ AATCC 16 Light fastness</li> <li>🍷 AATCC 8 or 116 wet/dry crocking</li> <li>🔥 California Bulletin CA TB 117-2013</li> <li>🇺🇸 ASTM D4157-02 Wyz Abrasion (Heavy Duty Upholstery)</li> <li>★ ASTM D3511 Pilling</li> </ul>	<ul style="list-style-type: none"> <li>pass</li> <li>pass</li> <li>pass</li> <li>pass</li> <li>pass</li> </ul>
Design/Colours	Mette Krebs Petersen	
Subject to changes and colour differences		

